



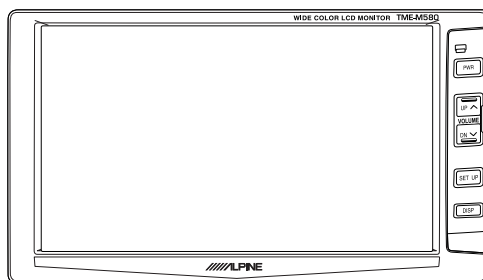
Printed in Taiwan R.O.C.

# TME-M580

## 5.8-INCH WIDE LCD COLOR MONITOR

### OWNER'S MANUAL

Please read before using this equipment.



## Points to Observe for Safe Usage



### WARNING

This symbol means important instructions.

Failure to heed them can result in serious injury or death.

**DO NOT DISASSEMBLE OR ALTER.** Doing so may result in an accident, fire or electric shock.

**KEEP SMALL OBJECTS SUCH AS BATTERIES OUT OF THE REACH OF CHILDREN.** Swallowing them may result in serious injury. If swallowed, consult a physician immediately.

**USE THE CORRECT AMPERE RATING WHEN REPLACING FUSES.** Failure to do so may result in fire or electric shock.

**USE ONLY IN CARS WITH A 12 VOLT NEGATIVE GROUND.** (Check with your dealer if you are not sure.) Failure to do so may result in fire, etc.

**BEFORE WIRING, DISCONNECT THE CABLE FROM THE NEGATIVE BATTERY TERMINAL.** Failure to do so may result in electric shock or injury due to electrical shorts.

**DO NOT SPLICE INTO ELECTRICAL CABLES.** Never cut away cable insulation to supply power to other equipment. Doing so will exceed the current carrying capacity of the wire and result in fire or electric shock.

**DO NOT INSTALL IN LOCATIONS WHICH MIGHT HINDER VEHICLE OPERATION, SUCH AS THE STEERING WHEEL OR GEARSHIFT.** Doing so may obstruct forward vision or hamper movement etc. and results in serious accident.

**DO NOT USE BOLTS OR NUTS IN THE BRAKE OR STEERING SYSTEMS TO MAKE GROUND CONNECTIONS.** Bolts or

nuts used for the brake or steering systems (or any other safety-related system), or tanks should NEVER be used for installations or ground connections. Using such parts could disable control of the vehicle and cause fire etc.

**DO NOT OPERATE ANY FUNCTION THAT TAKES YOUR ATTENTION AWAY FROM SAFELY DRIVING YOUR VEHICLE.** Any function that requires your prolonged attention should only be performed after coming to a complete stop. Always stop the vehicle in a safe location before performing these functions. Failure to do so may result in an accident.

**DO NOT ALLOW CABLES TO BECOME ENTANGLED IN SURROUNDING OBJECTS.** Arrange wiring and cables in compliance with the manual to prevent obstructions when driving. Cables or wiring that obstruct or hang up on places such as the steering wheel, gear lever, brake pedals, etc. can be extremely hazardous.

**DO NOT DAMAGE PIPE OR WIRING WHEN DRILLING HOLES.** When drilling holes in the chassis for installation, take precautions so as not to contact, damage or obstruct pipes, fuel lines, tanks or electrical wiring. Failure to take such precautions may result in fire.

**MAKE THE CORRECT CONNECTIONS.** Failure to make the proper connections may result in fire or product damage.

**KEEP THE VOLUME AT A LEVEL WHERE YOU CAN STILL HEAR OUTSIDE NOISE WHILE DRIVING.** Failure to do so may result in an accident.

**USE THIS PRODUCT FOR MOBILE 12V APPLICATIONS.** Use for other than its designed application may result in fire, electric shock or other injury.

**DO NOT INSTALL THE MONITOR NEAR THE PASSENGER SEAT AIR BAG.** If the unit is not installed correctly the air bag may not function correctly and when triggered the air bag may cause the monitor to spring upwards causing an accident and injuries.

**MINIMIZE DISPLAY VIEWING WHILE DRIVING.** Viewing the display may distract the driver from looking ahead of the vehicle and cause an accident.

**DO NOT WATCH VIDEO WHILE DRIVING.** Watching the video may distract the driver from looking ahead of the vehicle and cause an accident.

**INSTALL THE PRODUCT CORRECTLY SO THAT THE DRIVER CANNOT WATCH TV/VIDEO UNLESS THE VEHICLE IS STOPPED AND THE EMERGENCY BRAKE IS APPLIED.** It is dangerous (and illegal in many states) for the driver to watch TV/Video while driving a vehicle. Installing this product incorrectly enables the driver to watch TV/Video while driving. This may cause a distraction, preventing the driver from looking ahead, thus causing an accident. The driver or other people could be severely injured.

## Points to Observe for Safe Usage



### **CAUTION**

This symbol means important instructions.

Failure to heed them can result in injury or material property damage.

**ARRANGE THE WIRING SO IT IS NOT CRIMPED OR PINCHED BY A SHARP METAL EDGE.** Route the cables and wiring away from moving parts (like the seat rails) or sharp or pointed edges. This will prevent crimping and damage to the wiring. If wiring passes through a hole in metal, use a rubber grommet to prevent the wire's insulation from being cut by the metal edge of the hole.

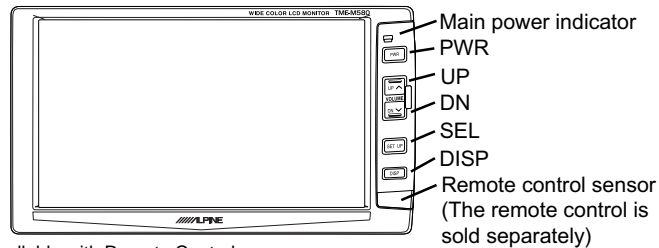
**USE SPECIFIED ACCESSORY PARTS AND INSTALL THEM SECURELY.** Be sure to use only the specified accessory parts. Use of other than designated parts may damage this unit internally or may not securely install the unit in place. This may cause parts to become loose resulting in hazards or product failure.

**DO NOT INSTALL IN LOCATIONS WITH HIGH MOISTURE OR DUST.** Avoid installing the unit in locations with high incidence of moisture or dust. Moisture or dust that penetrates into this unit may result in product failure.

**HAVE THE WIRING AND INSTALLATION DONE BY EXPERTS.** The wiring and installation of this unit requires special technical skill and experience. To ensure safety, always contact the dealer where you purchased this product to have the work done.

**HALT USE IMMEDIATELY IF A PROBLEM APPEARS.** Failure to do so may cause personal injury or damage to the product. Return it to your authorized Alpine dealer or the nearest Alpine Service Center for repairing.

## Operation



**NOTE:** Controllable with Remote Control

This unit can be controlled with an optional Alpine remote control. For details, consult your Alpine dealer. Point the optional remote control transmitter at the remote control sensor.

### Screen Display ON/OFF

1. Press the PWR button.
2. To turn off the POWER, press the PWR button again.

Note:

If properly connected, the monitors main POWER will turn off when the vehicle's ignition switch is off. If the main power lamp illuminates in the STAND BY mode, the vehicle's battery may be discharged.

### Adjusting the Volume

1. Adjust the volume level by pressing the  $\nabla$  DN or  $\blacktriangle$  UP button.

### Switching NTSC/PAL

Switch the movie output type NTSC/PAL in AUX mode.

1. Press the DISP button for at least 1 second.

Note: When the movie output type is not compatible, the movie does not output normally.

### Switching the source

1. Press the SEL button. Each press of the button will cycle through the modes as follows:



### Switching the display mode.

1. Press the DISP button.

Each press of the button will cycle through the modes as follows:



**WIDE:** Normal images are expanded uniformly in the horizontal direction and are displayed over the entire screen.

**CINEMA:** Normal images are expanded in the horizontal and vertical directions.

The top and bottom of the image is cut off. This mode is suited for 16:9 cinema size images.

**ZOOM:** Normal images are expanded in the horizontal direction and are displayed over the entire screen. The expansion ratio increases towards the right and left edges of the screen.

**NORMAL:** Normal image (4:3)

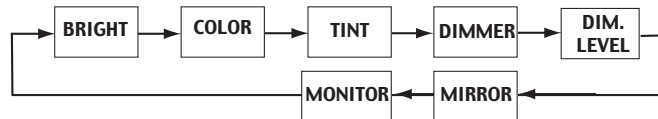
## Operation

### Reset the Monitor Settings

1. Press and hold the PWR button for at least 1 second.
  2. Press the SEL button.
  3. Select the Navigation system by pressing the DN or UP button.
    - ▲ : Standard - Navigation for all others (except Europe)
    - ▼ : Europe - Navigation for Europe only
- If no key is pressed within 10 seconds, the On-Screen Display will turn off.

### Adjustment

1. Press and hold the SEL button for at least 1 second.
2. Each press of the button will cycle through the modes as follows:



3. Adjust by pressing the ▼ DN or ▲ UP button.
  - BRIGHT: Allows the brightness of the picture.
  - COLOR: Change the color balance of the picture.  
Note: It is not adjustable in NAVIGATION (RGB connection) mode.
  - TINT: Adjust the tint of the picture.  
Note: It is not adjustable in NAVIGATION (RGB connection) and PAL mode.
  - DIMMER:
    - AUTO: Display illumination will dim when while the car's parking lights are on.
    - LOW: Backlighting is set to the adjusted DIM.LEVEL.
    - HIGH: Backlighting is set to its maximum level.
  - DIM.LEVEL: Adjust the backlighting level for LOW DIMMER.
  - MIRROR: Switch the picture to NORMAL/MIRROR (for rear view camera) image.
4. After completing adjustments, press and hold the SEL button for at least 1 second.  
If no key is pressed within 10 seconds, the OSD will turn off and any changes made are automatically set.

#### Notes:

- After turning the system off, a slight ghost of the image will remain temporarily. This is an effect peculiar to LCD technology and is normal.
- Under cold temperature conditions, the screen may lose contrast temporarily. After a short warm-up period, it will return to normal.
- The LCD panel is manufactured using an extremely high precision manufacturing technology. Its effective pixel ratio is over 99.99%. This means that there is a possibility that 0.01% of the pixels could be either always ON or OFF.

## In Case of Difficulty

If you encounter a problem, please review the items in the following check list. This guide will help you isolate the problem if the unit is at fault. Otherwise, make sure the rest of your system is properly connected or consult your authorized Alpine dealer.

Symptom	Cause	Solution
No function or display.	Car's ignition is off.	Turn the ignition on.
	No fuse or blown fuse.	Check the cause and replace the fuse.
	Incorrect connections.	Check connection and remedy.
	Vehicle's battery is weak.	Check the voltage of vehicle's battery.
Unclear picture display.	Fluorescent tube is exhausted.	Replace the fluorescent tube*.
No picture display.	Brightness control is set for minimum brightness control.	Adjust the brightness.
	Incorrect setting of the Input mode.	Switch to the correct mode.
	Protective circuit is on because of high temperature.	Wait until the temperature inside the vehicle comes down to the operating temperature range (45°C).
	Incorrect or open connection with the Monitor, AV Interface unit.	Check the connection and remedy.
Picture color is poor.	Brightness/Color/Tint control are not set to the proper positions.	Check each control.
Spots or dotted lines/stripes appear.	Caused by neon signs, high-voltage power lines, CB transmitter, other vehicle's ignition plugs, etc.	Change the location of your vehicle.
Unit does not operate.	Monitor's power is not turned on.	Turn on the monitor's power.
Navigation screen is not displayed or navigation system's remote controller keys do not work.	Navigation system's power is turned off.	Press the ON/OFF (POWER) button on the navigation system's remote controller to turn the navigation system's power on.

- \* Replacement of the fluorescent tube is not covered under the warranty. This is a consumable part subject to wear during normal usage.

## Installation

### Caution:

**Do not install the monitor near the front passenger seat air bag system.**

**<Mount it using the supplied bracket>**

1. Assemble the supplied bracket and mount the monitor temporarily.

**Note:** Always use the supplied bracket or equivalent.

2. Verify the installation location.

Select a flat surface and temporarily mount the unit. Use adhesive tape, etc.

#### Notes:

##### • Mounting hints

- Top of the monitor should not exceed the top of the dash when viewed from the driver's seat.
- Use a stable mounting surface.
- Angle the monitor for easy viewing.

- In a vehicle with a front passenger air bag, do not install the unit where it will interfere with the operation of the safety systems.

- If the surface of the dash board is finished with other than plastic (leather, wooden panel, cloth covered panel, etc.), there will be some damage if the bracket is removed.

- Installation close to other equipment (such as a GPS antenna) may give rise to mutual interference. Please pay careful attention to the installation location and maintain sufficient space between other equipment.

3. Remove the monitor from the bracket.

4. Peel the protective paper from the double-stick tape on the bracket's base.

Clean the mounting location with a suitable cleaner.

#### Notes:

- Warm the mounting location with a dryer, etc. and then place the bracket into position.
- Do not apply force or moisture for 24 hours after installation.
- If the bracket is not attached securely with just the tape, use the supplied screws to complete the installation.
- If the mounted surface is curved slightly, reform the base to fit to its shape.

5. Mount the monitor to the bracket.

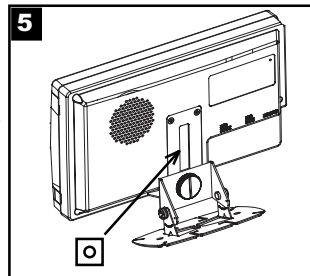
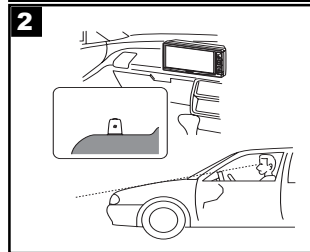
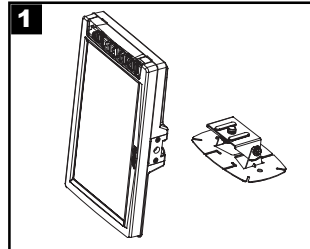
Thread the mounting screw into hole at the bottom of the monitor.

Secure the monitor by tightening the screw. Depending upon the location, the bracket can also be mounted using the supplied nut to slide into the back of the monitor. Thread the bracket mounting screw into the nut. Slide the nut in the channel on the back of the monitor and adjust the height and tighten.

Dress the monitor's cable using the cord clamp provided.

6. Adjust the height and angle of the monitor for easy visibility.

Determine the height and angle. Tighten the height and angle adjusting screws to secure the monitor.



### NOTE:

- The A/V Interface box may be mounted in any suitable location. Make sure the box and the wires connected to it will not interfere with safely operating the vehicle.
- Mounting the Interface box near the monitor will reduce the need for additional cable extensions.
- This monitor can be mounted in a headrest if desired. A special mounting kit is required and can be purchased from your Authorized Alpine dealer. Ask for model KTE-580V.

## Connections

### Cautions

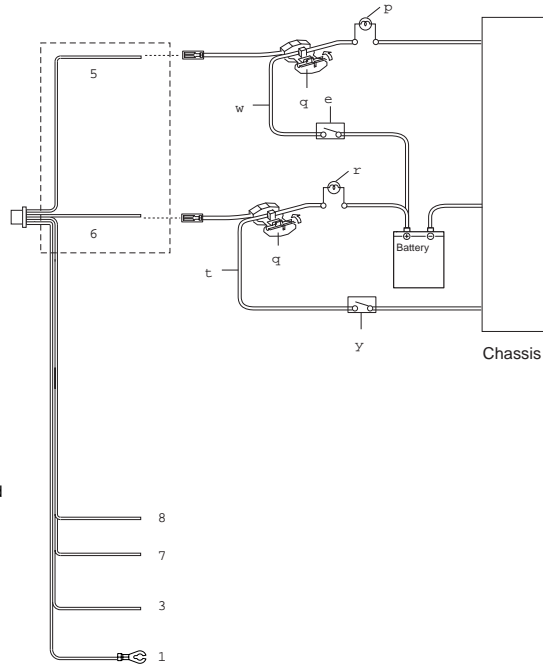
#### Make connections correctly.

Improper connections may cause a fire or operation failure.

- 1 Ground lead (Black)**  
Connect the lead to a good chassis ground on the vehicle. Make sure the connection is made to bare metal and is securely fastened using the sheet metal screw provided.
- 2 No Connection**
- 3 ACC power lead (Red)**  
To ACC power lead powered when engine key position is ACC.
- 4 No Connection**
- 5 Foot brake lead (Yellow/Black)**  
Connect this lead to the foot brake lead powered when the foot brake is pressed.
- 6 Hand brake lead (Yellow/Blue)**  
Connect this lead to the hand brake lead powered when the hand brake is pulled.
- 7 Dimmer (White/Blue)**  
To the Parking Light switch. Backlighting will dim when lights are turned on at night.
- 8 Remote control output lead (White/Brown)**  
To remote control input lead of ALPINE products used in the system.

#### For the North American Customers only

- p Foot brake lamp
- q Brake connector
- w Foot brake lead
- e Foot brake switch
- r Hand (parking) brake lamp
- t Hand (parking) brake lead
- y Hand (parking) brake switch



## Specifications

### MONITOR

Screen Size .....	5.8-type
Display System .....	Low reflection rear projection type TN liquid crystal panel
Drive System .....	Active matrix drive, normally white display
Number of Picture Elements .....	280,800 pcs. (H:1200 x V:234 dots)
Effective Number of Picture Elements .....	99.99% or more
Light Source .....	Internal optical system (U-type cold cathode fluorescent tube)
Dimensions (W x H x D) .....	160 x 93 x 27 mm (6.30 x 3.66 x 1.06 inches)
Weight .....	298g (10.5 oz)

### AV Interface Unit

Dimensions (W x H x D) .....	72 x 60 x 24 mm (2.84 x 2.36 x 0.95 inches)
Weight .....	128 g (4.5 oz.)

**Note:** Due to continuous product improvement, specifications and design are subject to change without notice.

### SERVICE CARE

#### • For European Customers

Should you have any questions about warranty, please consult your authorized Alpine Dealer.

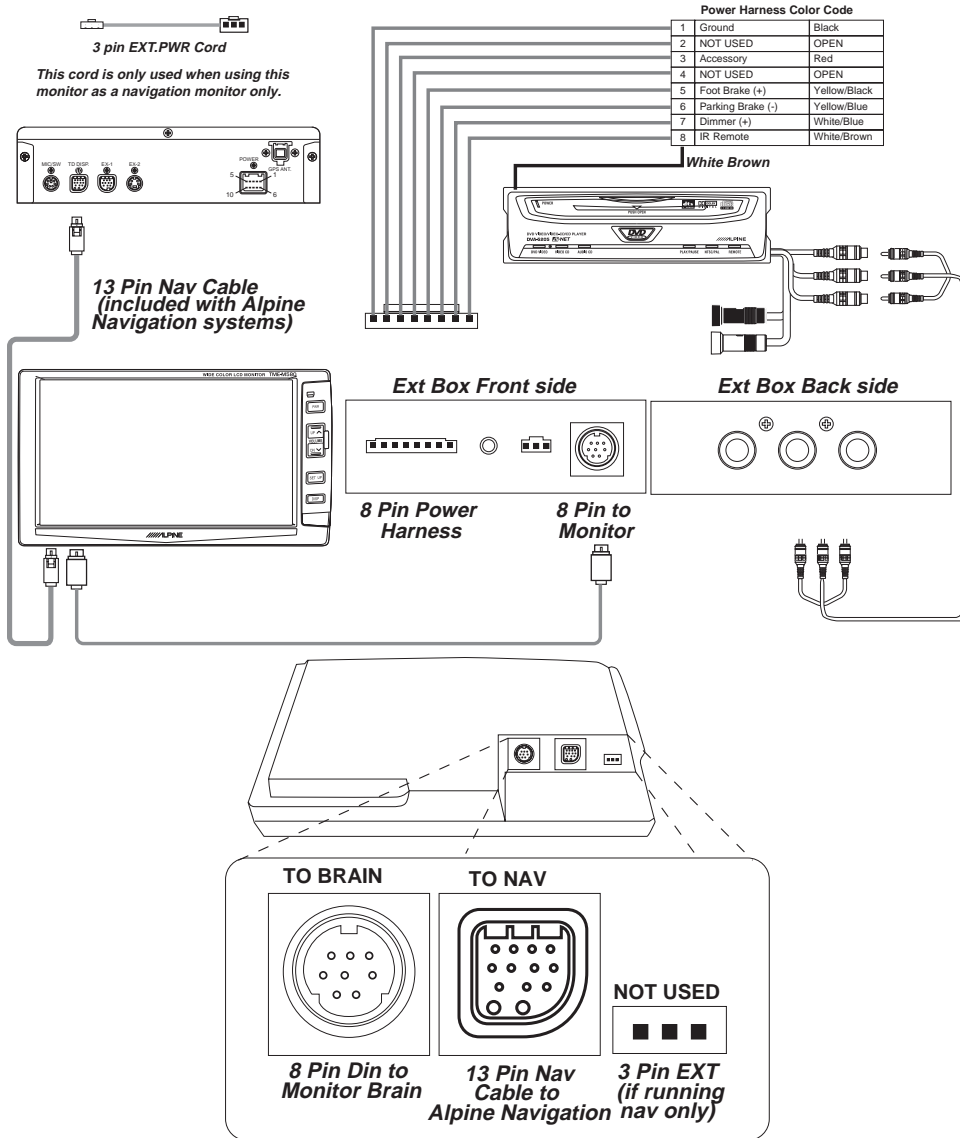
#### • For Customers in other Countries

### IMPORTANT NOTICE

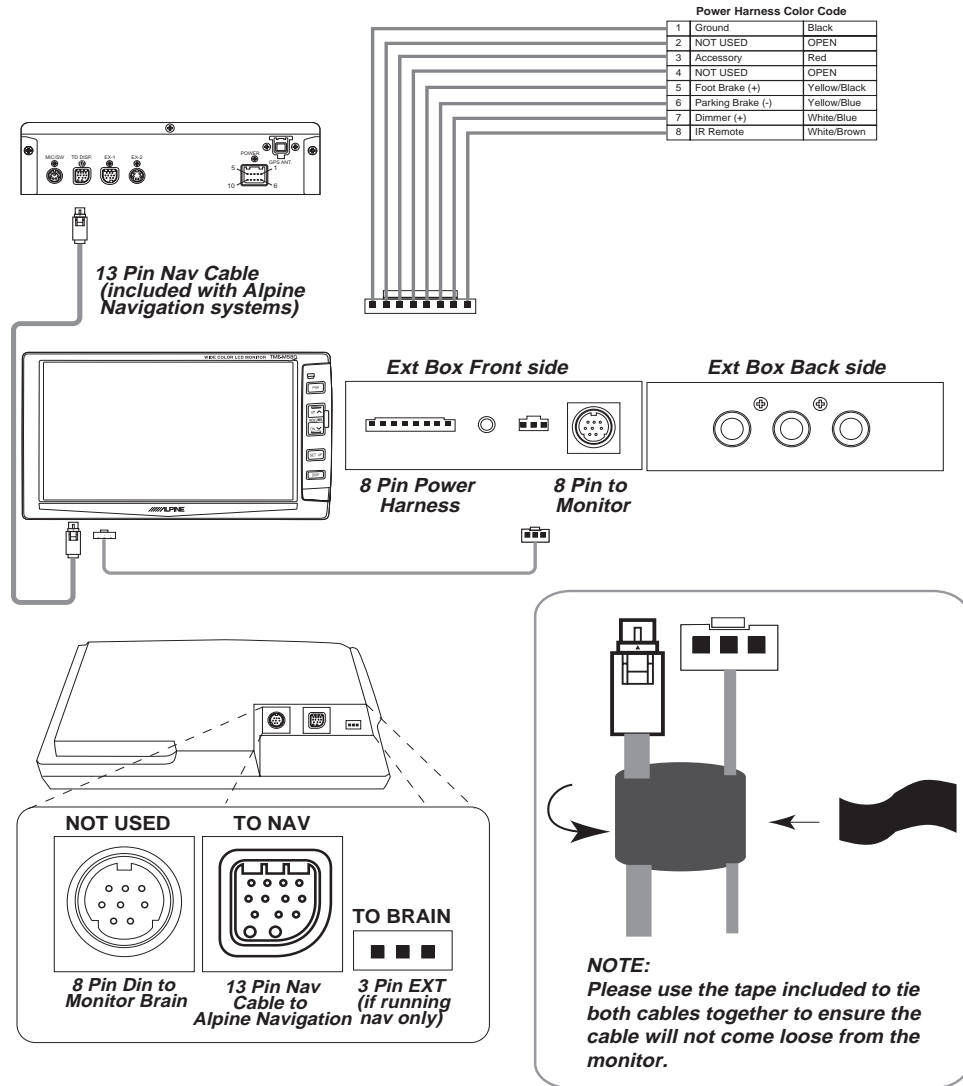
Customers who purchase the product with which this notice is packaged, and who make this purchase in countries other than the United States of America and Canada, please contact your dealer for information regarding warranty coverage.



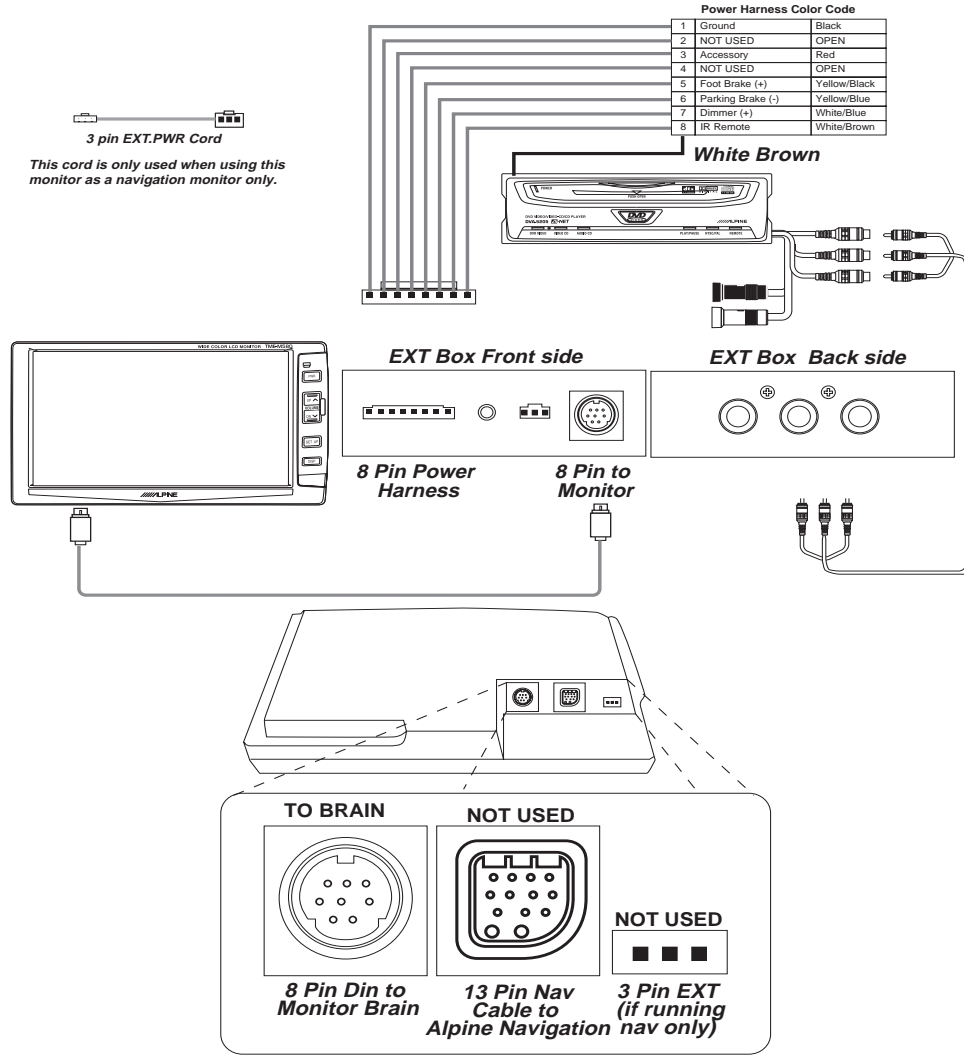
# TME-M580 + Video and Navigation



# TME-M580 + Navigation Only



# TME-M580 + Video Only





**ALPINE ELECTRONICS, INC.**

Tokyo office: 1-1-8 Nishi Gotanda,  
Shinagawa-ku, Tokyo 141-8501, Japan  
Tel.: (03) 3494-1101

**ALPINE ELECTRONICS OF AMERICA, INC.**

19145 Gramercy Place, Torrance,  
California 90501, U.S.A.  
Tel.: 1-800-ALPINE-1 (1-800-257-4631)

**ALPINE ELECTRONICS OF CANADA, INC.**

7300 Warden Ave., Suite 203, Markham,  
Ontario L3R 9Z6, Canada  
Tel.: 1-800-ALPINE-1 (1-800-257-4631)

**ALPINE ELECTRONICS OF AUSTRALIA PTY. LTD.**

6-8 Fiveways Boulevard Keysborough,  
Victoria 3173, Australia  
Tel.: (03) 9769-0000

**ALPINE ELECTRONICS GmbH**

Kreuzerkamp 7, 40878 Ratingen,  
Germany  
Tel.: 02102-45 50

**ALPINE ITALIA S.p.A.**

Viale C. Colombo 8,  
20090 Trezzano Sul Naviglio (MI), Italy  
Tel.: 02-48 47 81

**ALPINE ELECTRONICS FRANCE  
S.A.R.L.**

(RCS PONTOISE B 338 101 280)  
98, Rue de la Belle Etoile, Z.I. Paris  
Nord II, B.P. 50016, 95945, Roissy  
Charles de Gaulle Cedex, France  
Tel.: 01-48 63 89 89

**ALPINE ELECTRONICS OF U. K., LTD.**

13 Tanners Drive, Blakelands,  
Milton Keynes MK14 5BU, U.K.  
Tel.: 01908-61 15 56

**ALPINE ELECTRONICS DE ESPAÑA,  
S.A.**

Portal de Gamarra 36, Pabellón, 32  
01013 Vitoria (Alava) - APDO 133,  
Spain  
Tel.: 945-283588